

Scrap

| | |
|-----------------------------|---|
| ENGINE POWER | 190hp (142 kw) |
| OPERATING WEIGHT | 87,082 – 88,185 lbs (39,500 – 40,000 kg) |
| MAX REACH | 44' 4" – 49' 2" (13.5 – 15m) |
| MAX LIFTING CAPACITY | 33,750 – 33,950lbs (15,300 – 15,400 kg) |



Specifications

| Diesel Engine | |
|------------------------|------------------------------------|
| Manufacturer and model | Deutz-BF6M 1013 EC |
| Engine output | 190 HP (142 kW) |
| Nominal speed | 2,000 rpm |
| Displacement | 436 cu in (7.2 l) |
| Cooling system | Water and charge air cooling |
| Design | 6-cylinder turbocharged |
| Emission standards | COM II/TIER II |
| Air filter design | Two-stage filter with safety valve |
| Fuel capacity (usable) | 92 US gallons (350 l) |

| Operating Weight | |
|----------------------|-------------------------|
| Basic machine | 87,082 lbs – 88,185 lbs |
| with work attachment | (39.5 t – 40 t) |

| Electrical System | |
|-------------------|---------------------------|
| Operating voltage | 24 V |
| Batteries | 2 x 12 V / 100 Ah |
| Option | Generator system 13/20 kW |

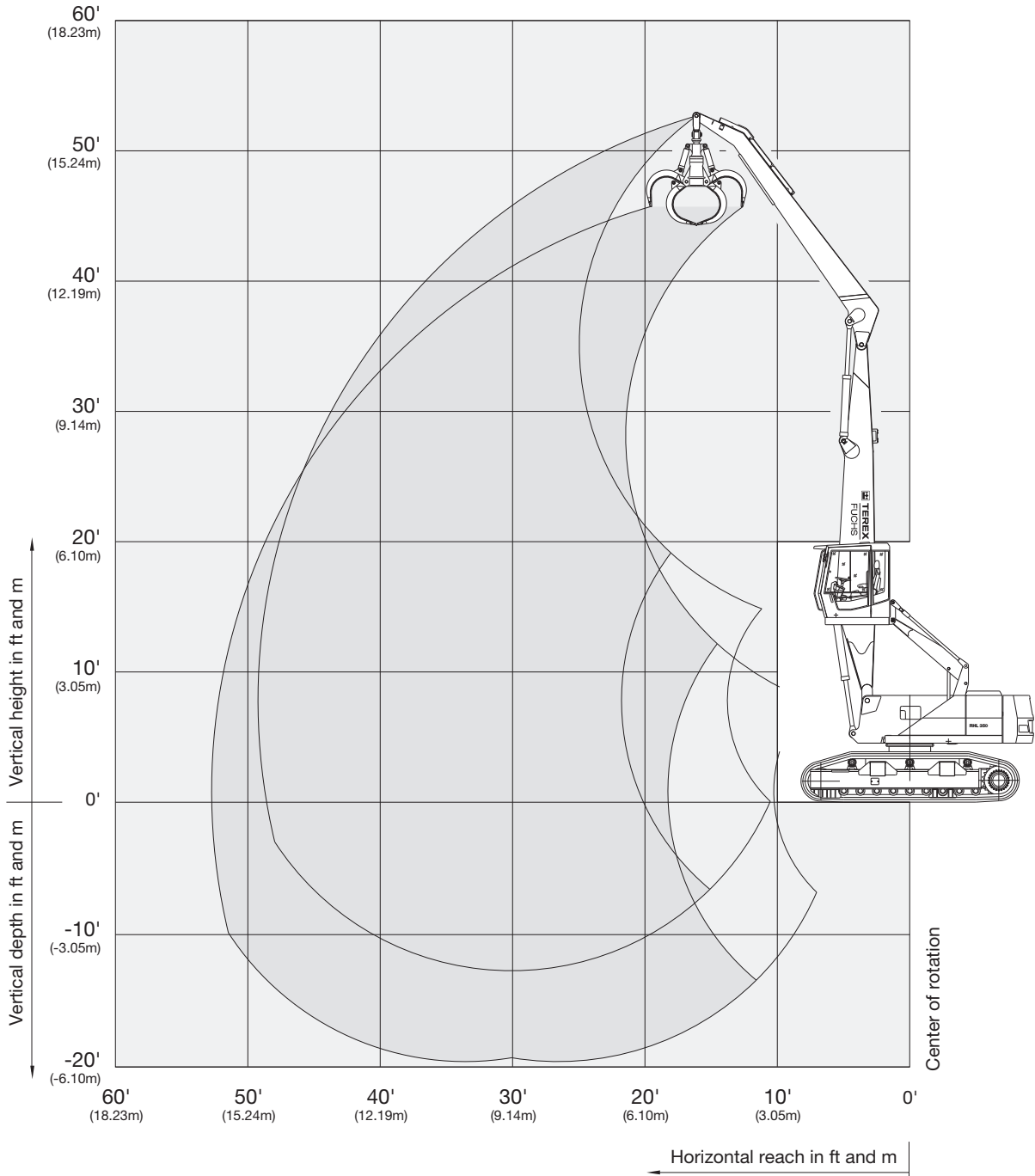
| Swing System | |
|----------------------------|---|
| Ring gear | Internally toothed ball ring gear |
| Drive | Multi-stage planetary gear with integrated multi-disc brake |
| Upper carriage swing speed | 0 – 8 rpm |

| Undercarriage | |
|--|-----------------------|
| 9 track rollers and 3 carrier rollers per side, maintenance free, variable hydraulic drive for both three stage planetary drives. Hydraulic adjustable track width between 800 mm and 3800 mm. | |
| Travel speed | 0 – 2.9 km/h |
| Ground pressure | 8.3 N/cm ² |
| Automatic clutch brakes | |

SCRAP
RHL 350

Working Range Diagram

RHL 350 reach 49' 2.4" (15 m)
 Work equipment: box-type boom 26' 10.8" (8.2 m), dipperstick 21' 3.6" (6.5 m)



Lifting Capacities

RHL 350 reach 49' 2.4" (15 m) (Lifting capacities in lbs)

Work equipment: box-type boom 26' 10.8" (8.2 m), dipperstick 21' 3.6" (6.5 m)

| Height in feet | Undercarriage track width | Reach in feet | | | | | | | | |
|----------------|---------------------------|---------------------|---------------------|---------------------|---------------------|---------------------|------------------|------------------|---------------|--|
| | | 15' | 20' | 25' | 30' | 35' | 40' | 45' | 50' | |
| 40' | 71" | | | 13,000** | 11,240 | 8,590 | | | | |
| | 150" | | | 13,000** (13,000**) | 12,120** (12,120**) | 11,680** (11,680**) | | | | |
| 35' | 71" | | | | 11,240 | 8,810 | 7,050 | | | |
| | 150" | | | | 11,900** (11,900**) | 11,240** (11,240**) | 9,470 (10,800**) | | | |
| 30' | 71" | | | 13,000** | 11,240 | 8,810 | 7,050 | | | |
| | 150" | | | 13,000** (13,000**) | 11,900** (11,900**) | 11,240** (11,240**) | 9,700 (10,580**) | | | |
| 25' | 71" | | | 13,440** | 11,020 | 8,590 | 7,050 | 5,730 | | |
| | 150" | | | 13,440** (13,440**) | 12,340** (12,340**) | 11,460** (11,460**) | 9,470 (10,580**) | 7,390 (9,920**) | | |
| 20' | 71" | | 16,970* | 14,100 | 10,580 | 8,370 | 6,830 | 5,730 | | |
| | 150" | | 16,970** (16,970**) | 14,990** (14,990**) | 13,220** (13,220**) | 11,460 (11,900**) | 9,470 (10,800**) | 7,710 (10,140**) | | |
| 15' | 71" | 26,230** | 18,290 | 13,440 | 10,360 | 8,150 | 6,610 | 5,510 | | |
| | 150" | 26,230** (26,230**) | 20,060** (20,060**) | 16,530** (16,530**) | 14,100 (14,100**) | 11,240 (12,560**) | 9,250 (11,240**) | 7,710 (10,140) | | |
| 10' | 71" | 25,130 | 16,970 | 12,560 | 9,700 | 7,930 | 6,390 | 5,510 | 4,620 | |
| | 150" | 33,730** (33,730**) | 23,580** (23,580**) | 17,410 (18,290**) | 13,440 (15,210**) | 10,800 (13,000**) | 9,030 (11,680**) | 7,490 (9,920) | 6,610 (8,590) | |
| 5' | 71" | 12,340* | 15,870 | 11,900 | 9,250 | 7,490 | 6,170 | 5,290 | 4,620 | |
| | 150" | 12,340* (12,340*) | 22,700 (26,230**) | 16,750 (19,840**) | 13,000 (16,310**) | 10,580 (13,660**) | 8,810 (11,460) | 7,490 (9,700) | 6,390 (8,590) | |
| 0' | 71" | 10,140* | 14,990 | 11,240 | 9,030 | 7,270 | 6,170 | 5,290 | | |
| | 150" | 10,140* (10,140*) | 21,600 (26,670**) | 16,090 (20,940**) | 12,560 (16,750**) | 10,360 (13,660) | 8,590 (11,460) | 7,270 (9,700) | | |
| -5' | 71" | 11,240* | 14,550 | 11,020 | 8,810 | 7,050 | 5,950 | 5,070 | | |
| | 150" | 11,240* (11,240*) | 21,160 (22,040**) | 15,650 (20,940**) | 12,340 (16,530) | 10,140 (13,440) | 8,590 (11,240) | 7,270 (9,700) | | |
| -10' | 71" | | 14,330 | 10,800 | 8,590 | 7,050 | 5,950 | | | |
| | 150" | | 21,160 (22,040**) | 15,650 (20,060**) | 12,340 (16,310**) | 9,920 (13,220) | 8,370 (11,240**) | | | |

RHL 350 reach 49' 2.4" (15 m) (Lifting capacities in tons)

Work equipment: box-type boom 26' 10.8" (8.2 m), dipperstick 21' 3.6" (6.5 m)

| Height in meters | Undercarriage track width | Reach in meters | | | | | | | | |
|------------------|---------------------------|-----------------|-----------------|---------------|---------------|---------------|-------------|-------------|-----------|--|
| | | 4.5 | 6 | 7.5 | 9 | 10.5 | 12 | 13.5 | 15 | |
| 12 | 1,800 mm | | | 5.9** | 5.1 | 3.9 | | | | |
| | 3,800 mm | | | 5.9** (5.9**) | 5.5** (5.5**) | 5.3** (5.3**) | | | | |
| 10.5 | 1,800 mm | | | | 5.1 | 4.0 | 3.2 | | | |
| | 3,800 mm | | | | 5.4** (5.4**) | 5.1** (5.1**) | 4.3 (4.9**) | | | |
| 9 | 1,800 mm | | | 5.9** | 5.1 | 4.0 | 3.2 | | | |
| | 3,800 mm | | | 5.9** (5.9**) | 5.4** (5.4**) | 5.1** (5.1**) | 4.4 (4.8**) | | | |
| 7.5 | 1,800 mm | | | 6.2** | 5.0 | 3.9 | 3.2 | 2.6 | | |
| | 3,800 mm | | | 6.1** (6.1**) | 5.6** (5.6**) | 5.2** (5.2**) | 4.3 (4.8**) | 3.6 (4.5**) | | |
| 6 | 1,800 mm | | 7.8* | 6.4 | 4.8 | 3.8 | 3.1 | 2.6 | | |
| | 3,800 mm | | 7.7** (7.7**) | 6.8** (6.8**) | 6.0** (6.0**) | 5.2 (5.4**) | 4.3 (4.9**) | 3.5 (4.6**) | | |
| 4.5 | 1,800 mm | 11.9** | 8.3 | 6.1 | 4.7 | 3.7 | 3.0 | 2.5 | | |
| | 3,800 mm | 11.9** (11.9**) | 9.1** (9.1**) | 7.5** (7.5**) | 6.4 (6.4**) | 5.1 (5.7**) | 4.2 (5.1**) | 3.5 (4.6) | | |
| 3 | 1,800 mm | 11.4 | 7.7 | 5.7 | 4.4 | 3.6 | 2.9 | 2.5 | 2.1 | |
| | 3,800 mm | 15.3** (15.3**) | 10.7** (10.7**) | 7.9 (8.3**) | 6.1 (6.9**) | 4.9 (5.9**) | 4.1 (5.3**) | 3.4 (4.5) | 3.0 (3.9) | |
| 1.5 | 1,800 mm | 5.6* | 7.2 | 5.4 | 4.2 | 3.4 | 2.8 | 2.4 | 2.1 | |
| | 3,800 mm | 5.6* (5.6*) | 10.3 (11.9**) | 7.6 (9.0**) | 5.9 (7.3**) | 4.8 (6.2**) | 4.0 (5.2) | 3.4 (4.4) | 2.9 (3.9) | |
| 0 | 1,800 mm | 4.6* | 6.8 | 5.1 | 4.1 | 3.3 | 2.8 | 2.4 | | |
| | 3,800 mm | 4.6* (4.6*) | 9.8 (12.1**) | 7.3 (9.5**) | 5.7 (7.6**) | 4.7 (6.2) | 3.9 (5.2) | 3.3 (4.4) | | |
| -1.5 | 1,800 mm | 5.1* | 6.6 | 5.0 | 4.0 | 3.2 | 2.7 | 2.3 | | |
| | 3,800 mm | 5.1* (5.1*) | 9.6 (10.0**) | 7.1 (9.5**) | 5.6 (7.5) | 4.6 (6.1) | 3.9 (5.1) | 3.3 (4.4) | | |
| -3 | 1,800 mm | | 6.5 | 4.9 | 3.9 | 3.2 | 2.7 | | | |
| | 3,800 mm | | 9.6 (10.0**) | 7.1 (9.1**) | 5.6 (7.4**) | 4.5 (6.0) | 3.8 (5.1**) | | | |

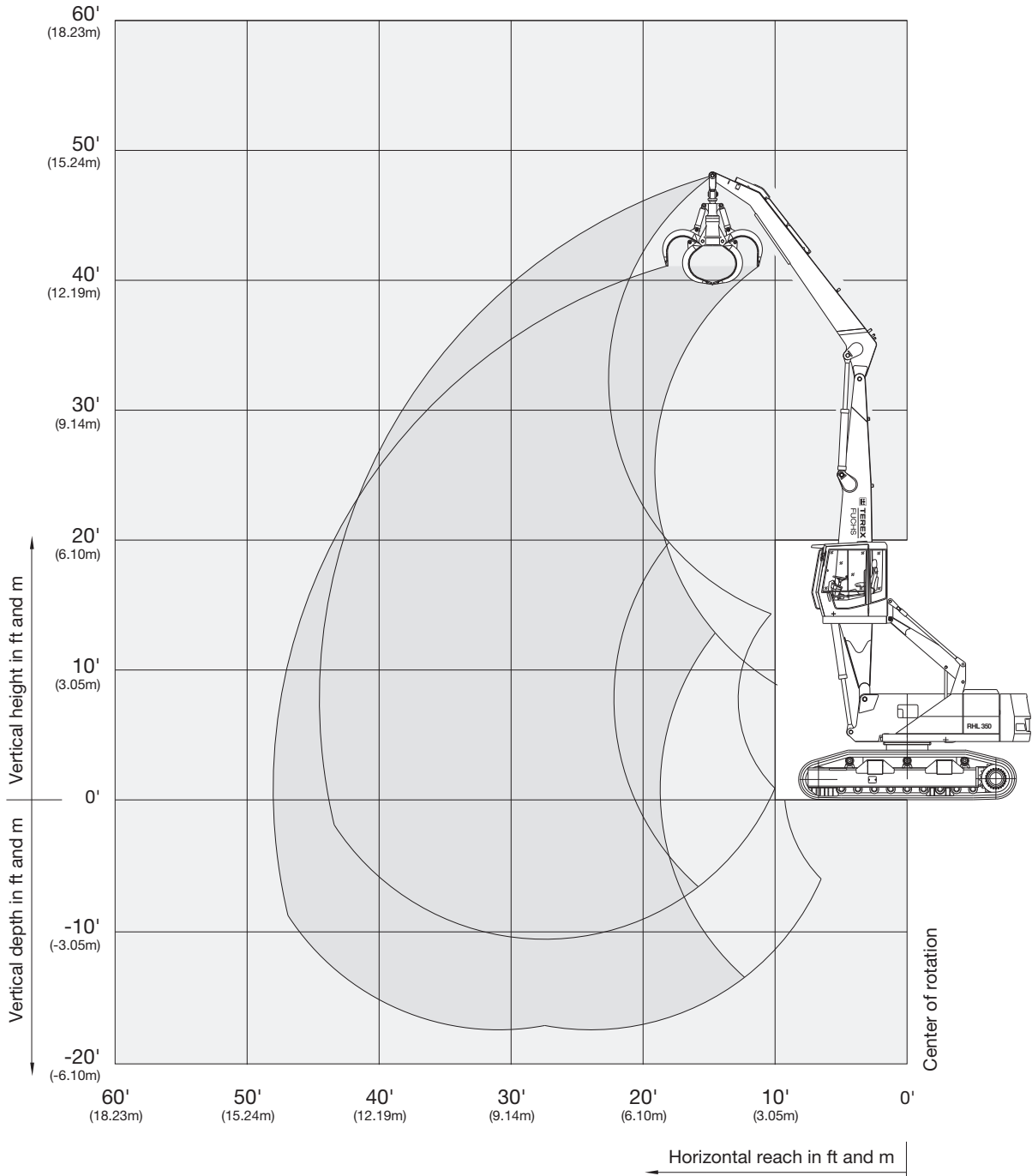
* Limited by dipper stick cylinders

** Limited by lift cylinders

The values are stated in pounds (lbs) or tons (t). The pump pressure for this table is 5220 psi (360 bar). The values amount to 75% of the static tipping load or 87% of the hydraulic lifting force. When the machine is standing on solid and level ground, these values apply to slewing operations through 360°. The values in brackets apply in the lengthwise direction of the undercarriage. The weight of the attached load hoisting implement (grab, magnet, load hook) must be deducted from the carrying capacity values. If the FUCHS-TEREX quick-attach system is mounted on the boom, carrying capacity values are reduced by 661 lbs (300 kg). In accordance with EC guidelines, hose-rupture safety valves on the lift cylinders and an overload warning device are required for crane operations.

Working Range Diagram

RHL 350 reach 44' 3.6" (13.5 m)
 Work equipment: box-type boom 24' 2.4" (7.4 m), dipperstick 19' (5.8 m)



Lifting Capacities

RHL 350 reach 44' 3.6" (13.5 m) (Lifting capacities in lbs)

Work equipment: box-type boom 24' 2.4" (7.4 m), dipperstick 19' (5.8 m)

| Height in feet | Undercarriage track width | Reach in feet | | | | | | |
|----------------|---------------------------|---------------------|---------------------|---------------------|---------------------|-------------------|------------------|---------------|
| | | 15' | 20' | 25' | 30' | 35' | 40' | 45' |
| 40' | 71" | | | 14,100 | | | | |
| | 150" | | | 14,770** (14,700**) | | | | |
| 35' | 71" | | | 13,880** | 10,800 | 8,370 | | |
| | 150" | | | 13,880** (13,880**) | 13,000** (13,000**) | 10,800* (10,800*) | | |
| 30' | 71" | | | 13,660** | 10,800 | 8,370 | | |
| | 150" | | | 13,660** (13,660**) | 12,780** (12,780**) | 11,460 (12,120**) | | |
| 25' | 71" | | | 14,330** | 10,800 | 8,370 | 6,830 | |
| | 150" | | | 14,330** (14,330**) | 13,220** (13,220**) | 11,460 (12,120**) | 9,250 (11,460**) | |
| 20' | 71" | | 17,630* | 13,880 | 10,580 | 8,370 | 6,610 | |
| | 150" | | 17,630* (17,630**) | 15,430** (15,430**) | 13,880** (13,880**) | 11,240 (12,560**) | 9,250 (11,460**) | |
| 15' | 71" | 26,450** | 18,290 | 13,220 | 10,140 | 8,150 | 6,610 | |
| | 150" | 26,450** (26,450**) | 20,500** (20,500**) | 16,970** (16,970**) | 13,880 (14,770**) | 11,020 (13,000**) | 9,030 (11,680**) | |
| 10' | 71" | 25,350 | 17,190 | 12,560 | 9,700 | 7,710 | 6,390 | 5,290 |
| | 150" | 33,950** (33,950**) | 23,800** (23,800**) | 17,410 (18,730**) | 13,440 (15,650**) | 10,800 (13,660**) | 8,810 (11,680) | 7,490 (9,920) |
| 5' | 71" | 18,290* | 16,090 | 11,900 | 9,250 | 7,490 | 6,170 | 5,290 |
| | 150" | 18,290* (18,290*) | 22,700 (26,670**) | 16,750 (20,280**) | 13,000 (16,530**) | 10,580 (13,880) | 8,810 (11,460) | 7,490 (9,920) |
| 0' | 71" | 13,880* | 15,210 | 11,460 | 9,030 | 7,270 | 6,170 | |
| | 150" | 13,880* (13,880*) | 22,040 (27,990**) | 16,310 (21,380**) | 12,780 (16,970**) | 10,360 (13,660) | 8,590 (11,460) | |
| -5' | 71" | 14,990* | 14,770 | 11,240 | 8,810 | 7,270 | 5,950 | |
| | 150" | 14,990* (14,990*) | 21,600 (27,550**) | 15,870 (21,160**) | 12,560 (16,530) | 10,140 (13,440) | 8,590 (11,240) | |
| -10' | 71" | | | 11,020 | 8,810 | | | |
| | 150" | | | 15,870 (20,060**) | 12,340 (16,090**) | | | |

RHL 350 reach 44' 3.6" (13.5 m) (Lifting capacities in tons)

Work equipment: box-type boom 24' 2.4" (7.4 m), dipperstick 19' (5.8 m)

| Height in meters | Undercarriage track width | Reach in meters | | | | | | |
|------------------|---------------------------|-----------------|-----------------|---------------|---------------|-------------|-------------|-----------|
| | | 4.5 | 6 | 7.5 | 9 | 10.5 | 12 | 13.5 |
| 12 | 1,800 mm | | | 6.4 | | | | |
| | 3,800 mm | | | 6.7** (6.7**) | | | | |
| 10.5 | 1,800 mm | | | 6.3** | 4.9 | 3.8 | | |
| | 3,800 mm | | | 6.3** (6.3**) | 5.9** (5.9**) | 4.9* (4.9*) | | |
| 9 | 1,800 mm | | | 6.2** | 4.9 | 3.8 | | |
| | 3,800 mm | | | 6.2** (6.2**) | 5.8** (5.8**) | 5.2 (5.5**) | | |
| 7.5 | 1,800 mm | | | 6.5** | 4.9 | 3.8 | 3.1 | |
| | 3,800 mm | | | 6.5** (6.5**) | 6.0** (6.0**) | 5.2 (5.5**) | 4.2 (5.2**) | |
| 6 | 1,800 mm | | 8.0* | 6.3 | 4.8 | 3.8 | 3.0 | |
| | 3,800 mm | | 8.0** (8.0**) | 7.0** (7.0**) | 6.3** (6.3**) | 5.1 (5.7**) | 4.2 (5.2**) | |
| 4.5 | 1,800 mm | 12.0** | 8.3 | 6.0 | 4.6 | 3.7 | 3.0 | |
| | 3,800 mm | 12.0** (12.0**) | 9.3** (9.3**) | 7.7** (7.7**) | 6.3 (6.7**) | 5.0 (5.9**) | 4.1 (5.3**) | |
| 3 | 1,800 mm | 11.5 | 7.8 | 5.7 | 4.4 | 3.5 | 2.9 | 2.5 |
| | 3,800 mm | 15.4** (15.4**) | 10.8** (10.8**) | 7.9 (8.5**) | 6.1 (7.1**) | 4.9 (6.2**) | 4.0 (5.3) | 3.4 (4.5) |
| 1.5 | 1,800 mm | 8.3* | 7.3 | 5.4 | 4.2 | 3.4 | 2.8 | 2.4 |
| | 3,800 mm | 8.3* (8.3*) | 10.3 (12.1**) | 7.6 (9.2**) | 5.9 (7.5**) | 4.8 (6.3) | 4.0 (5.2) | 3.4 (4.5) |
| 0 | 1,800 mm | 6.3* | 6.9 | 5.2 | 4.1 | 3.3 | 2.8 | |
| | 3,800 mm | 6.3* (6.3*) | 10.0 (12.7**) | 7.4 (9.7**) | 5.8 (7.7**) | 4.7 (6.2) | 3.9 (5.2) | |
| -1.5 | 1,800 mm | 6.8* | 6.7 | 5.1 | 4.0 | 3.3 | 2.7 | |
| | 3,800 mm | 6.8* (6.8*) | 9.8 (12.5**) | 7.2 (9.6**) | 5.7 (7.5) | 4.6 (6.1) | 3.9 (5.1) | |
| -3 | 1,800 mm | | | 5.0 | 4.0 | | | |
| | 3,800 mm | | | 7.2 (9.1**) | 5.6 (7.3**) | | | |

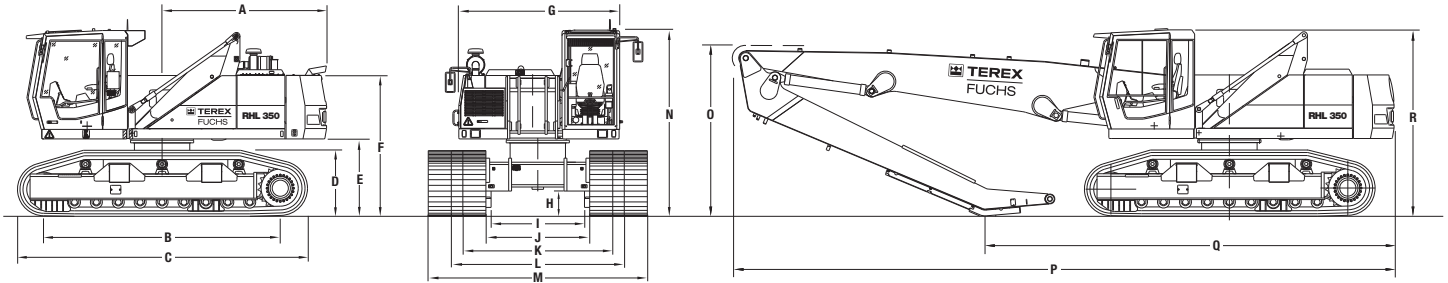
* Limited by dipper stick cylinders

** Limited by lift cylinders

The values are stated in pounds (lbs) or tons (t). The pump pressure for this table is 5220 psi (360 bar). The values amount to 75% of the static tipping load or 87% of the hydraulic lifting force. When the machine is standing on solid and level ground, these values apply to slewing operations through 360°. The values in brackets apply in the lengthwise direction of the undercarriage. The weight of the attached load hoisting implement (grab, magnet, load hook) must be deducted from the carrying capacity values. If the FUCHS-TEREX quick-attach system is mounted on the boom, carrying capacity values are reduced by 661 lbs (300 kg). In accordance with EC guidelines, hose-rupture safety valves on the lift cylinders and an overload warning device are required for crane operations.

Scrap RHL 350

Dimensions/Transport Dimensions



Dimensions

| | | | |
|----------|-----------------|----------|-----------------|
| A | 112" (2,850 mm) | H | 17" (440 mm) |
| B | 161" (4,100 mm) | I | 64" (1,620 mm) |
| C | 198" (5,030 mm) | J | 71" (1,800 mm) |
| D | 45" (1,145 mm) | K | 102" (2,600 mm) |
| E | 53" (1,343 mm) | L | 118" (3,000 mm) |
| F | 96" (2,445 mm) | M | 150" (3,800 mm) |
| G | 110" (2,790 mm) | N | 128" (3,255 mm) |

Transport Dimensions

| | Maximum Reach | |
|----------|------------------|------------------|
| | 49' (15.0 m) | 44' (13.5 m) |
| O | 143" (3,650 mm) | 118" (3,000 mm) |
| P | 480" (12,200 mm) | 450" (11,450 mm) |
| Q | 291" (7,400 mm) | 279" (7,100 mm) |
| R | 128" (3,250 mm) | 128" (3,250 mm) |

Specifications

Hydraulic System

Single-circuit hydraulic system with load-sensing and flow-on-demand controls; optimum use of the available engine output through load sensing control

Separate oil cooler with large cooling surface

Hydraulic oil filter integrated in the oil tank

Central greasing system as standard

Hydraulic oil tank 100 US gal (380 l)

Maximum pump capacity 153.2 US gal/min (at 2,000 rpm) (580 l/min)

Maximum operating pressure 5220 psi (360 bar)

Brake System

Service brake Hydraulic single-circuit braking system, acting on all four wheel pairs

Parking brake Electrically operated disc brake, acting on both front and rear axle

Grabs

0.8 yd³/0.6 m³ cactus grab with cast central case and enclosed swing drive, grab jaws with wear-resistant grab liners and tips

Cab

Cab: Hydraulically height-adjustable cab with max. eye level of 18' 4.8" (5.6 m), human-engineered, functional design and excellent all-round visibility; tilt and height-adjustable steering column; front windshield slideable under cab roof, with pull-down sunblind; lift-up skylight on cab roof

Operator's seat: Air-cushioned comfort seat with pneumatically adjustable lumbar support, safety belt and headrest. Seat heating available on request. The seat meets EC-safety and health requirements (Directive 89/392/EEC, Paragraph 3.2.2). Seat position, seat inclination and seat cushion multi-adjustable in line with position of armrests and pilot control units

Heating: 3-setting fan for hot water heating, 4 adjustable defroster nozzles

Air condition: standard

Options: engine-independent heating, bulletproof glass, cab stone guard, stereo cassette radio

Official Homologation: Certification according to CE-regulations



TEREX Fuchs
8800 Rostin Road
Southaven, MS 38671
USA

Toll-Free: 1-888-201-6008
Phone: 662-393-1800
Fax: 662-393-1700
Web: www.terex.com
Email: sales@terexca.com

For more information, product demonstration or details on purchase, lease and rental plans, please contact your local TEREX Distributor.